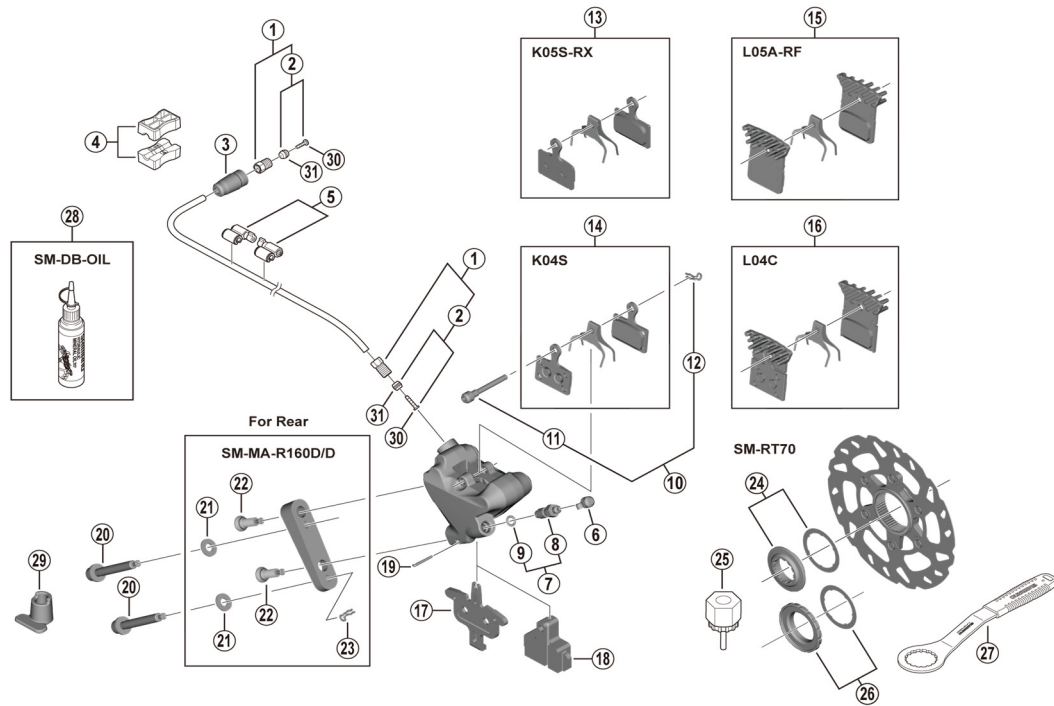


**SLX Disc Brake**  
**BR-M7110** Brake Caliper  
**SM-RT70** Disc Rotor

**SM-BH90-SS** Brake Hose



ITEM NO.	SHIMANO CODE NO.	DESCRIPTION
1	Y8JA98010	Flare nut unit
2	Y8JA98020	Olive and connector insert
3	Y1XJ16000	Cover
4	Y8H198030	TL-BH61 Shimano original tool (2 pcs.)
5	Y83098040	SM-HANG Hose supporter A and B
6	Y8B214000	Bleed nipple cap
7	Y8CL98050	Bleed nipple and seal ring
8	Y8CL24200	Bleed nipple
9	Y8B511001	O-ring for bleed nipple
10	Y2GM98020	Pad axle and snap retainer
11	Y8EB12010	Pad axle
12	Y8J716000	Snap retainer
*	EBPK05SRXA	K05S-RX Resin pad and spring (pair)
13	Y2GM98030	
*	IBPK04SMXA	K04S Metal pad and spring (pair)
14	Y8N398020	
*	EBPL05ARFA	L05A-RF Resin pad with fin and spring (pair)
15	Y2EM98010	
*	EBPL05ARFBS	
	Y2EM98011	L05A-RF Resin pad with fin and spring (25 pairs)
*	IBPL04CMFA	L04C Metal pad with fin and spring (pair)
16	Y8N398040	
17	Y8N218000	Pad spacer
18	Y8N219000	Bleeding spacer
19	Y8N207000	Screw fixing pin
20	Y8N208050	Caliper fixing screw C for 15 mm rear mount thickness
	Y8N208010	Caliper fixing screw C for 20 mm rear mount thickness
	Y8N208020	Caliper fixing screw C for 25 mm rear mount thickness
	Y8N208030	Caliper fixing screw C for 30 mm rear mount thickness
21	Y8NU02000	Washer for R160 adapter
22	Y8N206000	Caliper fixing screw B
23	Y8NU03000	Snap retainer
24	Y8P898010	Lock ring and washer
25	Y12009230	TL-LR15 Lock ring removal tool
26	Y26L98030	Lock ring and washer (external spline type)
27	Y13098000	TL-FC36 Lock ring removal tool
28	Y83998020	Mineral oil (100 ml)
	Y83998030	Mineral oil (500 ml)
29	Y8N221000	Screw length selector
*	Y8JA98026	Connecting insert (100 pcs.)
*	Y8H298047	Olive (100 pcs.)

Jul.-2022-4738C

© Shimano Inc. I

Specifications are subject to change without notice.

**SHIMANO**